

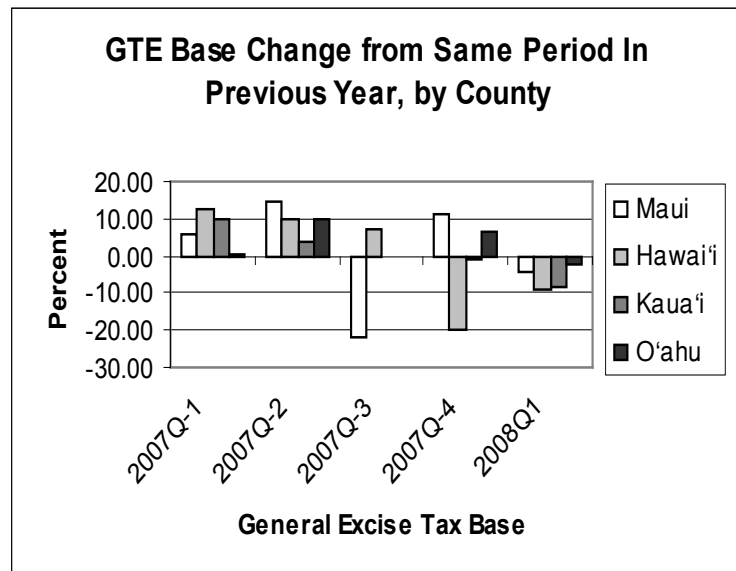
## City & County Economic Indicators First Quarter 2008

### General Excise Tax Base City & County of Honolulu (\$1,000)<sup>1</sup>

2003	2004	2005	2006	2007
\$48,423,061	\$54,091,673	\$61,493,701	\$67,432,040	\$70,068,140

#### Quarterly Percent Change, City & County (Same Quarter Previous Year)

	\$ Value (\$1,000)	Percent Change
<b>2007</b>		
Q-1	\$17,845,857	0.24
Q-2	\$17,513,415	9.75
Q-3	\$17,134,624	-0.09
Q-4	\$17,574,244	6.37
<b>2008</b>		
Q-1	\$17,483,018	-2.03



<sup>1</sup> Estimates

Note: Figures available in sub-categories.

Source: State of Hawai'i, Department of Taxation.

Hawaii Small Business Development Center Network  
HAWAII BUSINESS RESEARCH LIBRARY

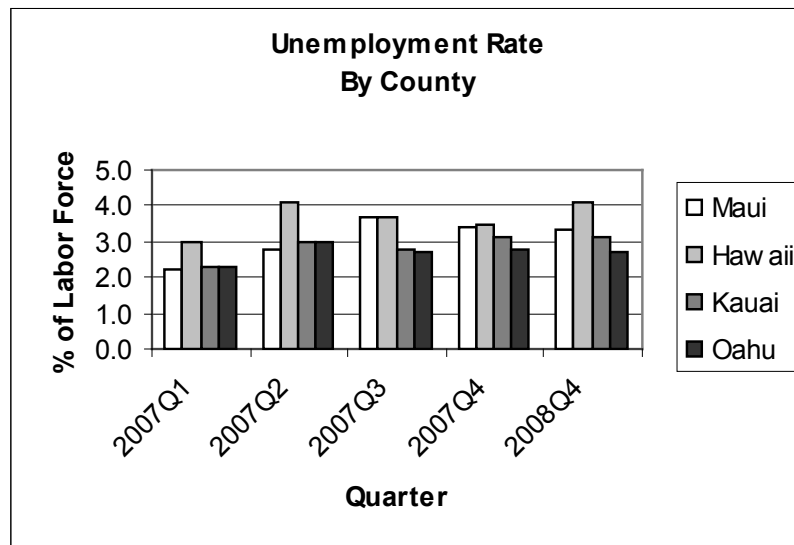
590 Lipoa Parkway, Suite 136  
Kihei, Maui, Hawaii 96753  
Telephone: (808) 875-2400  
Fax: (808) 875-2406  
<http://www.hbri-sbdc.org>  
e-mail: [library@hawaii-sbdc.org](mailto:library@hawaii-sbdc.org)

## Labor Force City & County of Honolulu

	Historical		Last Five Years <sup>1</sup>				
	1990	2000	2003	2004	2005	2006	2007
Civilian Labor Force	409,250	433,100	433,750	436,150	445,200	451,300	449,850
Civilian employed	401,250	416,450	417,500	422,500	433,350	440,500	438,600
Civilian Unemployed	8,000	16,700	16,250	13,650	11,850	10,850	11,250
Unemployment Rate	2.0	3.9	3.7	3.1	2.7	2.4	2.5

### Quarterly Unemployment Rate, City & County

Quarter	Rate
<b>2007</b>	
Q-1	2.3
Q-2	3.0
Q-3	2.7
Q-4	2.8
<b>2008</b>	
Q-1	2.7



<sup>1</sup> Estimates

Note: Figures available by island.

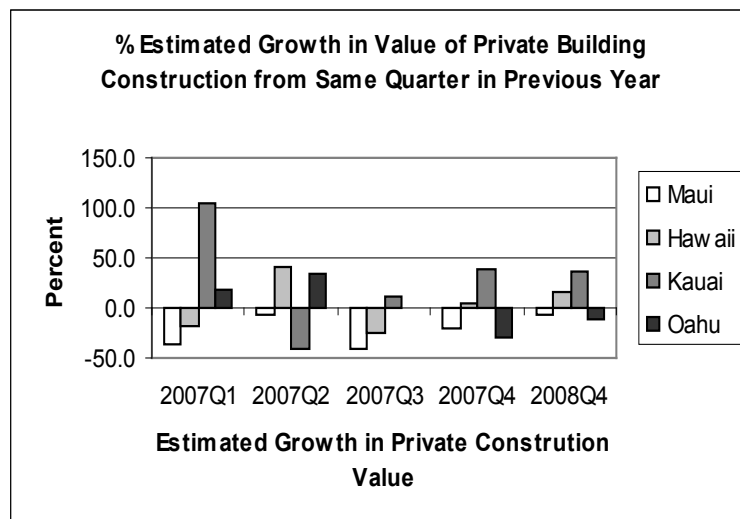
Source: State of Hawai'i, Department of Labor

## Estimated Value of Private Building Construction, City & County

	2003	2004	2005	2006	2007
Estimated Value (\$1,000)	\$1,109,568	\$1,320,552	\$1,364,029	\$1,625,328	\$1,676,232

### Quarterly Estimated Value of Private Building Construction, City & County (\$1,000)

	\$ Value (\$1000)	Percent Change
<b>2007</b>		
Q-1	\$353,732	17.9
Q-2	\$540,310	33.1
Q-3	\$469,854	-0.8
Q-4	\$312,336	-29.9
<b>2008</b>		
Q-1	\$309,828	-12.4



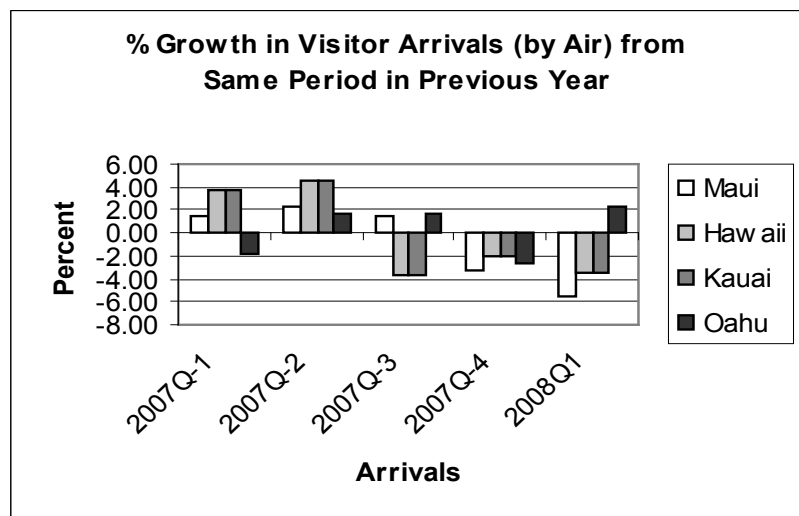
Source: State of Hawai'i, Department of Business Economic Development and Tourism.

## Visitor Industry Statistics City & County of Honolulu

	2002	2003	2004	2005	2006
Total LOS	7.01	6.85	6.86	6.92	6.94
Domestic LOS	8.01	7.43	7.55	7.58	7.45
Int'l LOS	5.70	6.02	5.89	5.97	6.12
Total Expenditures (\$million.)	\$4,793	\$4,726	\$5,478	\$5,770	\$5,736
Occupancy Rate	70.3	73.1	79.7	85.6	83.1
Avg. Room Rate	\$111.46	\$116.25	\$123.23	\$139.68	\$155.77
Revenue per available room	\$78.36	\$84.98	\$98.21	\$119.57	\$129.44
Visitor Arrivals (Arrivals by Air)	4,276,077	4,090,483	4,464,551	4,731,843	4,627,484
Domestic	2,423,169	2,415,386	2,612,029	2,808,467	2,840,061
International	1,852,908	1,675,097	1,852,523	1,923,376	1,787,423

### Quarterly Visitor Arrivals (By Air), City & County of Honolulu

	Visitor Arrivals	Percent Change
<b>2007</b>		
Q-1	1,088,272	-1.82
Q-2	1,133,456	1.64
Q-3	1,255,838	1.73
Q-4	1,118,764	-2.59
<b>2008</b>		
Q-1	1,112,523	2.23



### Quarterly Visitor Expenditures<sup>1</sup>, City & County of Honolulu

	2007 Q-1	Q-2	Q-3	Q-4	2008 Q-1
Expenditures (\$millions)	\$1,318.6	\$1,329.1	\$1,557.2	\$1,506.9	\$1,410.1
% Change <sup>2</sup>	0.47	-10.16	4.45	7.57	6.94

<sup>1</sup> Estimates

<sup>2</sup> Same quarter previous year.

Source: State of Hawai'i, Department of Business Economic Development and Tourism.

## Employment by Industry

	Average Quarterly Employment (2006Q3, 2006Q4, 2007Q1, 2007Q2)	Hiring Growth (%) (2006 Q2, 2007Q2)	Average Quarterly New Hire Employment (2006Q3, 2006Q4, 2007Q1, 2007Q2)	Average Monthly Earnings (\$) (2006Q3, 2006Q4, 2007Q1, 2007Q2)
<b>All NAICS Sectors (City &amp; County of Honolulu 2007 Q-2)</b>	<b>360,556</b>	<b>0.86</b>	<b>33,334</b>	<b>\$3,268</b>
Accommodation and Food Services (72)	56,581	-7.37	6,341	\$2,038
Retail Trade (44-45)	47,895	-5.87	4,199	\$2,416
Health Care and Social Assistance (62)	44,651	45.52	4,029	\$3,619
Administrative and Support Services (56)	35,089	-9.03	5,159	\$2,443
Construction (23)	24,316	5.24	2,256	\$5,021
Transportation and Warehousing (48-49)	22,971	-12.71	2,007	\$3,292
Professional, Scientific, and Technical Services (54)	20,755	-6.67	1,627	\$5,154
Other Services (81)	18,355	3.60	1,406	\$2,373
Wholesale Trade (42)	15,106	33.53	1,104	\$4,083
Finance and Insurance (52)	14,770	0.27	920	\$4,936
Manufacturing (31-33)	12,275	1.73	828	\$3,210
Educational Services (61)	10,664	1.36	766	\$2,887
Information (51)	9,482	29.35	597	\$4,157
Real Estate and Rental and Leasing (53)	8,708	-6.75	694	\$3,700
Management of Companies and Enterprises (55)	7,818	-67.98	585	\$4,490
Arts, Entertainment, and Recreation (71)	6,776	1.78	654	\$1,850
Utilities (22)	2,043	-5.12	38	\$7,103
Agriculture, Forestry, Fishing and Hunting (11)	1,990	59.09	109	\$2,071
<b>Quarterly Workforce Indicators 2007 Q-2</b>				
Total_Employment			372,580	521,011
Net_Job_Flows			1,066	938
Job_Creation			18,052	25,689
New_Hires			58,224	84,059
Separations			66,296	95,801
Turnover			10.60%	10.90%
Avg_Monthly_Earnings			\$3,278.00	\$3,205.00
Avg_New_Hire_Earnings			\$2,360.00	\$2,336.00

<sup>1</sup> Estimates

Note: Figures available by sub-categories.

Source: U.S. Census Bureau, Local Employment Dynamics