

## Hawai'i County Economic Indicators First Quarter 2008

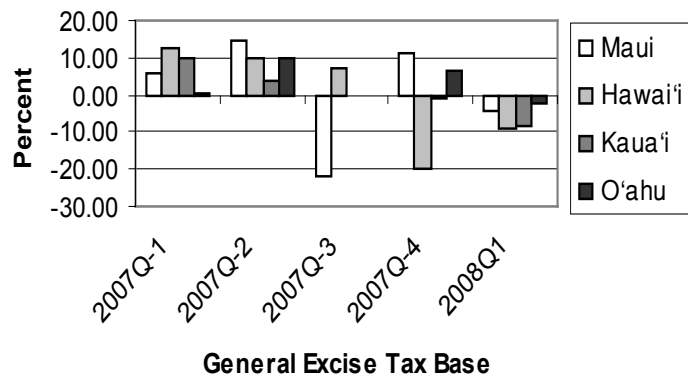
### General Excise Tax Base Hawai'i County (\$1,000)<sup>1</sup>

2003	2004	2005	2006	2007
\$4,085,547	\$4,049,782	\$5,033,442	\$5,457,932	\$5,592,384

#### Quarterly Percent Change, Hawai'i County (Same Quarter Previous Year)

	\$ Value (\$1,000)	Percent Change
<b>2007</b>		
Q-1	\$1,516,603	12.37
Q-2	\$1,509,281	9.72
Q-3	\$1,351,040	7.38
Q-4	\$1,215,460	-19.86
<b>2008</b>		
Q-1	\$1,368,007	-9.36

#### GTE Base Change from Same Period In Previous Year, by County



<sup>1</sup> Estimates

Note: Figures available in sub-categories.

Source: State of Hawaii, Department of Taxation.

Hawai'i Small Business Development Center Network  
HAWAI'I BUSINESS RESEARCH LIBRARY

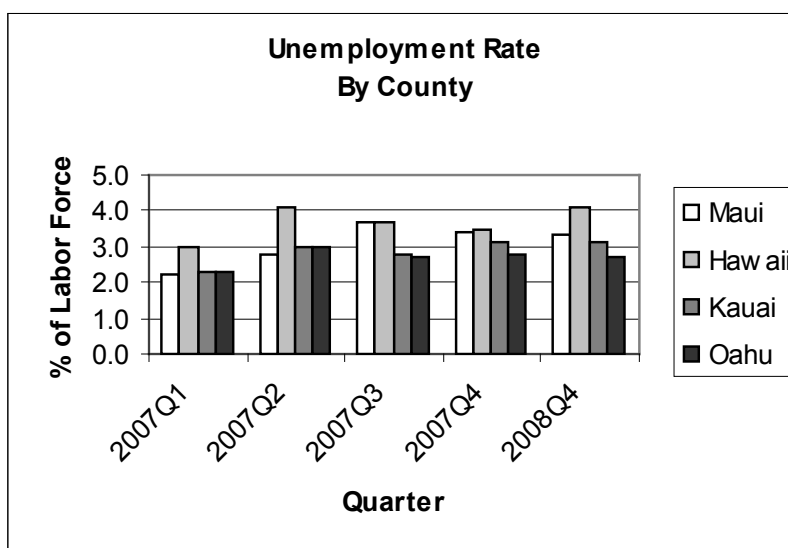
590 Lipoa Parkway, Suite 136  
Kihei, Maui, Hawaii 96753  
Telephone: (808) 875-2400  
Fax: (808) 875-2406  
<http://www.hbri-sbdc.org>  
e-mail: [library@hawai'i-sbdc.org](mailto:library@hawai'i-sbdc.org)

## Labor Force Hawai'i County

	Historical		Last Five Years <sup>1</sup>				
	1990	2000	2003	2004	2005	2006	2007
Civilian Labor Force	58,350	74,200	78,400	79,800	81,850	85,050	86,300
Civilian employed	56,300	70,750	74,750	76,750	79,150	82,550	83,400
Civilian Unemployed	2,050	3,500	3,650	3,100	2,700	2,500	2,900
Unemployment Rate	3.5	4.7	4.6	3.9	3.3	2.9	3.3

### Quarterly Unemployment Rate, Hawai'i County

Quarter	Rate
<b>2007</b>	
Q-1	3.0
Q-2	4.1
Q-3	3.7
Q-4	3.5
<b>2008</b>	
Q-1	4.1



<sup>1</sup> Estimates

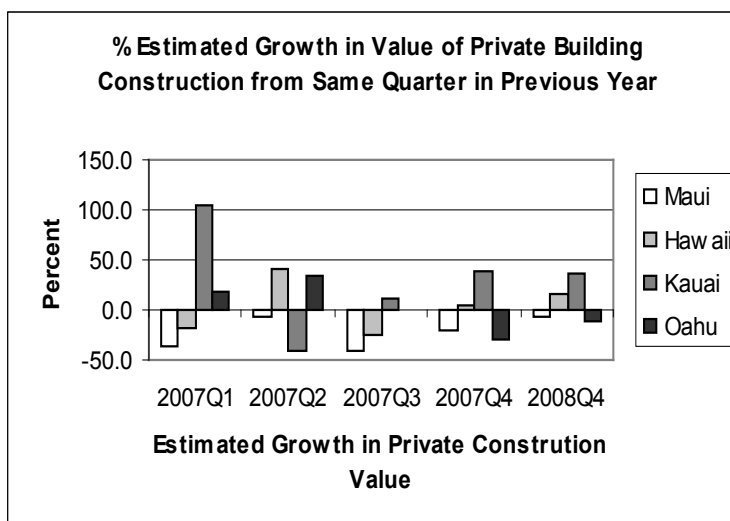
Source: State of Hawaii, Department of Labor

## Estimated Value of Private Building Construction, Hawai'i County

	2003	2004	2005	2006	2007
Estimated Value (\$1,000)	\$619,675	\$826,494	\$1,008,388	\$926,019	\$912,529

### Quarterly Estimated Value of Private Building Construction, Hawai'i County (\$1,000)

	\$ Value (\$1000)	Percent Change
<b>2007</b>		
Q-1	\$209,681	-18.5
Q-2	\$306,363	41.1
Q-3	\$188,762	-25.7
Q-4	\$207,722	5.1
<b>2008</b>		
Q-1	\$243,855	16.3



Source: State of Hawaii, Department of Business Economic Development and Tourism.

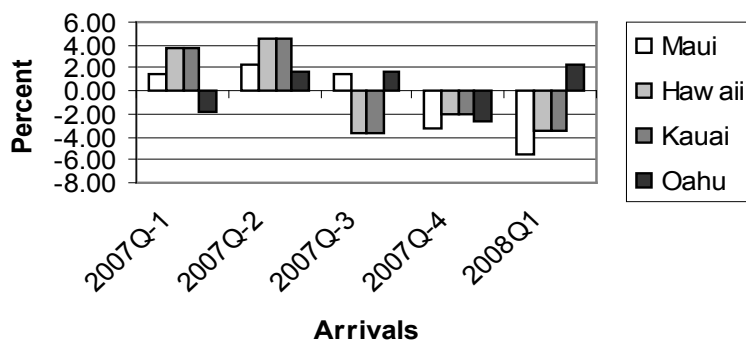
## Visitor Industry Statistics Hawai'i County

	2002	2003	2004	2005	2006
Length of Stay (LOS)					
Domestic LOS	7.34	7.16	7.35	7.28	7.04
International LOS	4.28	4.92	4.47	4.38	3.89
Total Expenditures (\$million)	\$1,374.6	\$1,247.8	\$1,312.0	\$1,667.0	\$1,652.0
Occupancy Rate	62.1	65.3	70.2	72.2	71.1
Avg. Room Rate	\$172.80	\$163.23	\$161.65	\$173.67	\$189.35
Revenue per available room	\$107.31	\$106.59	\$113.48	\$125.39	\$134.63
Visitor Arrivals (Arrivals by Air)	1,243,313	1,207,164	1,281,156	1,521,537	1,597,056
Domestic	918,680	922,217	982,704	1,173,629	1,272,618
International	324,633	284,946	298,452	347,907	324,439

### Quarterly Visitor Arrivals (By Air), Hawai'i County

	Visitor Arrivals	Percent Change
<b>2007</b>		
Q-1	405,665	3.79
Q-2	399,076	4.50
Q-3	419,392	-3.61
Q-4	374,698	-2.09
<b>2008</b>		
Q-1	391,602	-3.47

### % Growth in Visitor Arrivals (by Air) from Same Period in Previous Year



### Quarterly Visitor Expenditures<sup>1</sup>, Hawai'i County

	2007 Q-1	Q-2	Q-3	Q-4	2008 Q-1
Expenditures (\$millions)	\$436.0	\$384.8	\$454.6	\$410.5	\$461.2
% Change <sup>2</sup>	12.10	0.98	8.42	-1.06	5.79

<sup>1</sup> Estimates

<sup>2</sup> Same quarter previous year.

Source: State of Hawai'i, Department of Business Economic Development and Tourism.

## Employment by Industry

	Average Quarterly Employment (2006Q3, 2006Q4, 2007Q1, 2007Q2)	Hiring Growth (%) (2006 Q2, 2007Q2)	Average Quarterly New Hire Employment (2006Q3, 2006Q4, 2007Q1, 2007Q2)	Average Monthly Earnings (\$) (2006Q3, 2006Q4, 2007Q1, 2007Q2)
<b>All NAICS Sectors (Hawai'i County 2007 Q-2)</b>	<b>53,836</b>	<b>-9.71</b>	<b>5,337</b>	<b>\$2,921</b>
Accommodation and Food Services (72)	11,836	-21.30	1,424	\$2,309
Retail Trade (44-45)	9,071	3.43	828	\$2,441
Health Care and Social Assistance (62)	5,863	-8.29	425	\$2,944
Construction	5,524	22.01	678	\$4,786
Administrative and Support and Management (56)	3,018	-10.62	424	\$2,359
Transportation and Warehousing (48-49)	2,416	-36.73	177	\$2,717
Agriculture, Forestry, Fishing and Hunting (11)	2,291	15.65	160	\$2,197
Other Services (81)	2,085	20.05	201	\$2,407
Arts, Entertainment, and Recreation (71)	1,973	-93.47	280	\$2,787
Manufacturing (31-33)	1,690	32.38	156	\$2,922
Real Estate and Rental and Leasing (53)	1,537	-13.44	117	\$3,796
Wholesale Trade (42)	1,493	26.16	109	\$3,330
Professional, Scientific, and Technical Services (54)	1,375	-8.33	96	\$4,043
Finance and Insurance (52)	1,177	-20.20	87	\$3,807
Educational Services (61)	950	52.05	65	\$2,521
Information (51)	628	27.45	52	\$3,861
Management of Companies and Enterprises (55)	435	6.90	18	\$3,109
Utilities (22)	419	55.32	21	\$5,774

<sup>1</sup> Estimates

Note: Figures available by sub-categories.

	Hawai'i County (Q2)	State (Q2)
<b>Quarterly Workforced Indicators 2007 Q-2</b>		
Total_Employment	57,736	521,011
Net_Job_Flows	-213	938
Job_Creation	2,793	25,689
New_Hires	9,938	84,059
Separations	11,439	95,801
Turnover	12.80%	10.90%
Avg_Monthly_Earnings	\$2,932.00	\$3,205.00
Avg_New_Hire_Earnings	\$2,267.00	\$2,336.00

Source: U.S. Census Bureau, Local Employment Dynamics